

Officers and Board

President

Sandra Hester

sdhester@hindsc.edu

Vice-President

Billie Mayes

billiem29@yahoo.com

Secretary

Pam Jones

pam_726@hotmail.com

Treasurer

Alois Wolverton

aawolverton@hindsc.edu

Board Member

Jim Booth

jwbooth@hindsc.edu

Board Member

Niall Cook

niall.cook@mdrs.state.ms.us

Board Member

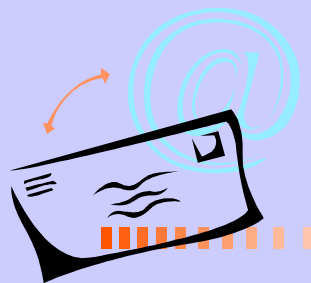
Jamy Dickson

jedickson@hindsc.edu

Newsletter Editor

Renee Johnston

naynay987@hotmail.com



Mississippi Registry of Interpreters for the Deaf

Mailing Information:

MSRID

P.O. Box 219

Raymond, MS 39154

Mississippi Registry of Interpreters for the Deaf



Mission

It is the mission of the Mississippi Registry of Interpreters for the Deaf to provide state and local forums and an organizational structure for the continued growth and development of the professions of interpretation and transliteration of American Sign Language and English.

Purpose

To provide: a more effective use of interpreters and transliterators by and for deaf and hard of hearing people, as well as for the general public.

To seek: ways and means to make interpreting services more readily available for deaf and hard of hearing people.

To exchange: ideas, opinions, and experiences concerning interpreting.

To further: the use of all effective communicative skills in serving deaf and hard of hearing people.

To strive: for the attainment of the highest standards in the use of communication skills with deaf and hard of hearing people.

To create: awareness among deaf and hard of hearing people and the general public concerning the need for and availability of interpreting services.

To act: as a body to advance professional and ethical standards for interpreters.

What is MSRID?

MSRID is the state organization for professional interpreters providing a venue for sign language interpreters to come together for sharing, learning, and growing professionally.

What does an interpreter do?

Sign Language/spoken English interpreters are highly skilled professionals. They must be able

to listen to another person's words, inflections and intent and simultaneously render them into the visual language of signs using the mode of communication preferred by the deaf consumer. The interpreter must also be able to comprehend the signs, inflections and intent of the deaf consumer and simultaneously speak them in articulate, appropriate English. They must understand the cultures in which they work and apply that knowledge to promote effective cross-cultural communications.



MSRID is an Affiliate Chapter of the Registry of Interpreters for the Deaf.

Headquarters for RID is located in Alexandria, Virginia. Its web site is www.rid.org and its phone numbers are (703) 838-0030 V, (703) 838-0459 TTY, (703) 838-0454 Fax.



Membership Categories

Regular Members: Persons working in a deaf/interpreting related field, is in good standing with the Chapter, and adheres to the Code of Ethics set forth by RID. Regular members may vote and hold office.

Student Members: Persons taking six (6) or more credit hours in an Interpreter Training Program and/or deaf related field, is in good standing with the Chapter, and adheres to the Code of Ethics set forth by RID. Student members may not vote or hold office.

Associate Member: Persons interested in supporting the goals and purposes of this Chapter. Associate members may not vote or hold office.

Organizational Members: Organizations interested in supporting the goals and purposes of this Chapter. Organizational members or their representatives may not vote or hold office.

Membership Rates:

Regular	\$20.00
Student	\$10.00
Associate	\$10.00
Organizations	\$50.00

